

RAJA AMPAT, HALMAHERA AND LEMBEH STRAIT

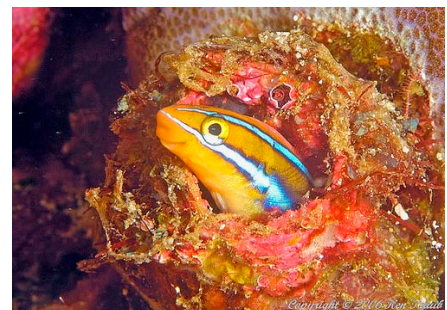


THIS TRIP TAKES US FROM SORONG IN WEST PAPUA, THROUGH THE MOLUCCAS SEA PAST HALMAHERA TO MANADO IN NORTH SULAWESI. THE 700 NAUTICAL MILE JOURNEY TAKES US THROUGH A RANGE OF DIFFERENT LAND AND SEASCAPES. THE TRIP STARTS IN THE BEAUTIFUL MISOOL ISLAND GROUP IN RAJA AMPAT. ON THE SOUTH COAST OF HALMAHERA WE WILL DIVE WALLS AND DROP-OFFS WITH BIG FISH ACTION. THE SMALL ISLANDS OFF THE WEST COAST OF HALMAHERA HOME GREAT CORAL REEFS. THE END OF THE TRIP IN NORTH SULAWESI OFFERS YOU PRISTINE CORAL REEFS, GREAT FISH LIFE AND SPECTACULAR CRITTER DIVING IN THE FAMOUS BLACK SAND OF THE LEMBEH STRAIT. A DIVERSE TRIP WITH SOMETHING FOR EVERYBODY!

MISOOL The beauty of the Misool Island Group will carry you away. This entire region is one enormous ancient limestone basin and even has limestone as the seafloor. Those who have travelled to Palau can picture these little tropical islands covered of palms, with steep sided walls where wind and sea has worn the rock away.

The islands, or islets, are uncountable. The larger ones, like Misool itself, have canyons and lagoons speckled with white sand beaches ideal for tender boat rides. One can spend hours exploring and never see the same bay. It really is a place of great beauty both above and below the water. It's rightly being considered by the Indonesian government for national park status and by the United Nations as a world heritage site.

Misool is one of the places on earth where you'll find the most various species of fish, hard and soft corals, sponges, worms, nudibranchs, shrimps and crabs and all kind of non-vertebrates, like cuttlefish and octopus. You will as well come across Wobbegong shark and Epaulette sharks, which you will only find in the region of "Raja Ampat". Giant clams as well as fantastic tiny shells. Photographers as well as Videographers will have the dives of their lifetime.



REEF BASICS 	
Diving season	From March to April and from October to December. The periods indicate are the best times for diving in this cruising route.
Rainy season	From January to February and from June to August.
Water temperature	26-30°C
Visibility	10-30m.
Depth	5- >40m.
Currents	Usually gently but can be strong.
Surface conditions	Calm.
Experience level	Beginner-intermediate-advanced.
Dive sites	> 80.
Length of stay	Recommended 11-16 days on liveaboard cruise.

TRIP ADVISOR →	
Airport	Arrival Airport Sorong. Departure Airport Manado. International flight to Manado and then domestic flight to Sorong.
Weather	27-32 degrees. Indonesia has two seasons: wet and dry. In most of Indonesia the wet season is from October to April and the dry from May to September. West Papua dry season October to April, wet season is from May to September.

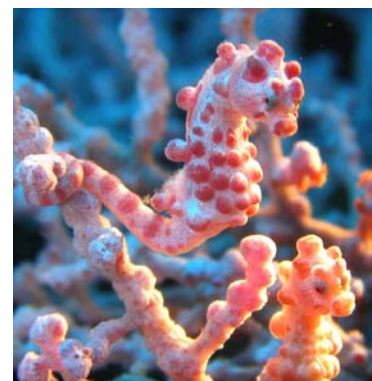
MARENGARANO BAY Steep walls with excellent soft coral growth, sponges, sea fans and hard corals are the foreground to schools of barracuda, sharks, eagle rays and jacks. Humphead parrotfish, sweetlips and batfish and many other species can be seen here. Visibility is often 20m plus. For the night dive we move to a protected bay in southern Mandiulis.

GORAICI ISLAND GROUP In the morning we reach the islands of Ado, Gafi and Siko – comprising the island group of Goraici. Here we will spend two days where you can expect diverse dive sites with excellent visibility. Amazing reeftops where hard and leather corals compete for space, submerged pinnacles, walls and slopes all with beautiful coral growth. In the volcanic island of Makian a fantastic view awaits as we cruise closer to the volcano looms high with the sunrise behind. With an elevation of 600m and thick vegetation this will be a sunrise to remember. The natural beauty continues below the waterline. Under the pier we have a chance to do a great muck dive with frogfish, ghost pipefish, scorpion fish and all kinds of eels amongst the coral covered pillars. In the north of Makian, colorful coral contrasts beautifully with the black sand.

TIFORE Overnight the cruise continues to the remote island of Tifore which lies in between Halmahera and Sulawesi. We will dive in 3 different spots with big fish action guaranteed. On the submerged reef we have a chance to see a big school of barracuda, and with a bit of luck you will watch as they form a barrel above you. Also look out for bigeye trevally, humphead parrotfish, sweetlips and many more. A dive do not miss.

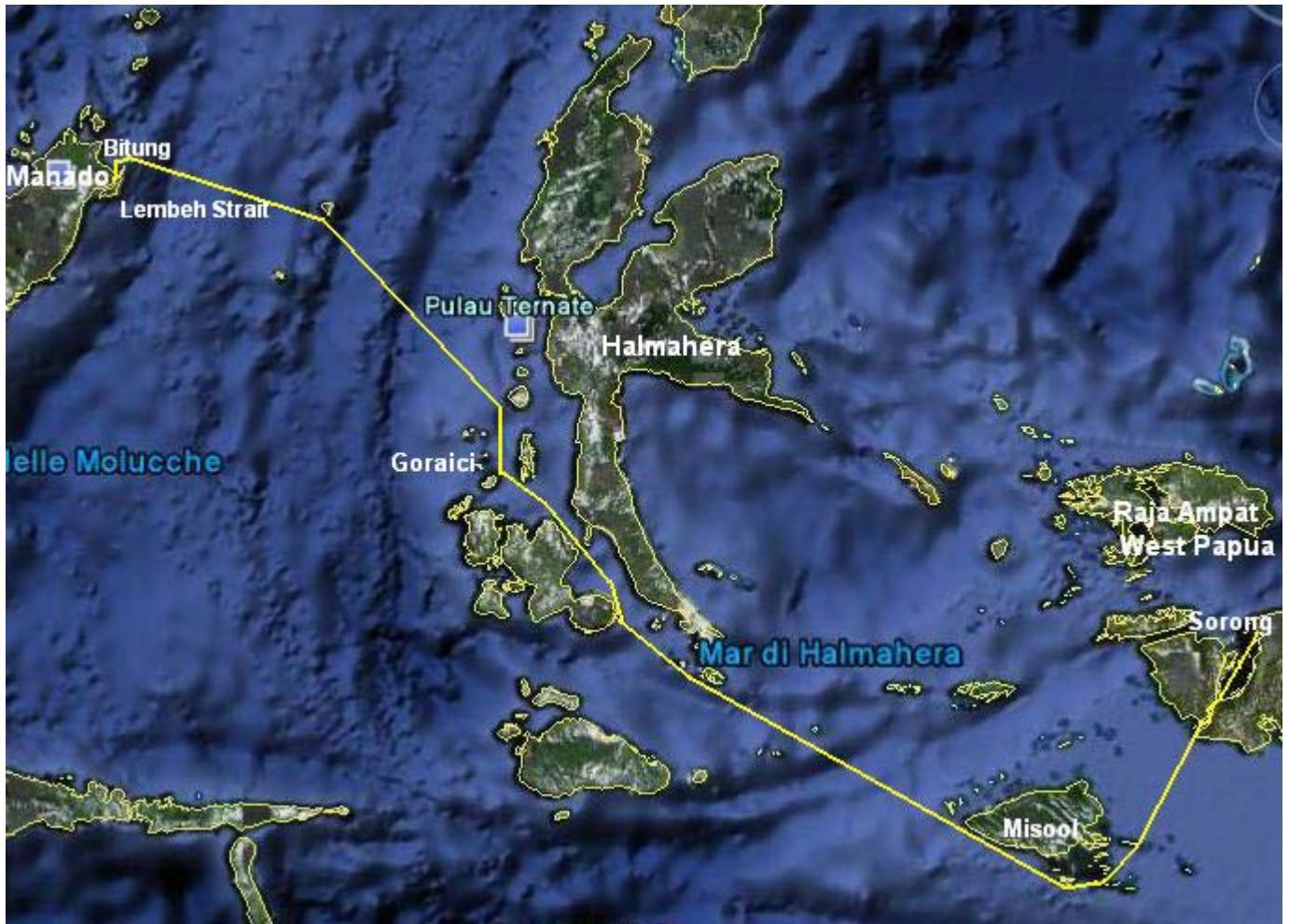
BANGKA Arrival in Bangka, North Sulawesi renowned for its diversity, coral growth and beautiful underwater scenery. Exciting dive sites with huge boulders and rocks overgrown with black coral. Rich coral gardens provide habitat for scores of fish. Pygmy seahorses, leaf scorpion fish, ghost pipefish and frogfish can also be found.

LEMBEH STRAIT Here our journey will end, but not before we enjoy the special critter dives on offer here. The last dives will be on different dive sites in the Lembeh Strait. On the black sand you can find mimic octopus, hairy frogfish, flying gurnards, Pegasus sea moths and so many kinds of nudibranchs. Muck diving at its best.



OTHERS ACTIVITIES	
climbing:	Manado Tua Volcano in Bunaken National Marine Park.
Trekking:	Minhasa Highland, visiting friendly Minahasan villages surrounded by volcanoes, lakes and rice fields.
Rafting:	White Water Rafting (class II and III).
Hiking:	Tangkoko Nature Reserve.
Tour:	Visiting Baliem Valley highland of Irian Jaya, inhabited by the Dani Tribes and other sub tribes of Yali and Lani with their complex and primitive cultures, which looks more like "stone age" cultures.
-PLEASE INQUIRY FOR DETAILS IF INTERESTED- ✉	

Contact us:
info@cruisingindonesia.com
WWW.CRUISEINDONESIA.COM
✉ Mail us for a tailor-made diving cruise



Raja Ampat, Halmahera and Lembah Strait

GO TO THE HOME PAGE OF:

WWW.CRUIRINGINDONESIA.COM

TO SEE ANOTHER INDONESIA DIVE SITES

Contact us:

info@cruisingindonesia.com

WWW.CRUIRINGINDONESIA.COM

✉ Mail us for a tailor-made diving cruise