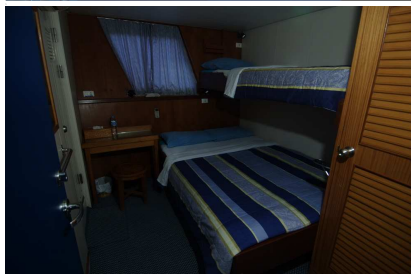


M.Y. OCEAN ROVER

Ocean Rover is a motor yacht purpose-designed for luxury liveaboard, and carries a full set of international certificates, including the Passenger Ship Safety Certificate. This enabled it to operate in many different countries, taking divers to all the best reefs of South East Asia.

Based in Sulawesi and cruises the exciting dive sites of Manado and Raja Ampat Archipelago. This spacious and comfortable dive steel boat with a revolutionary "whale deck" design was specifically built for diving, and comfortably accommodates 16 guests. There are no guest cabins below decks so there are no loud annoying engine room noises. The huge dive-deck has several camera tables and rinse tanks. Care has been taken to ensure that photographers have safe places to put down their expensive cameras just before and after the dive. The spacious salon offers a fully equipped entertainment center and a camera charging area with 220/110 V connections.

Scuba diving destinations: Raja Ampat, North Sulawesi, Halmahera.



TECHNICAL SPECIFICATIONS:

Type:	Motor Yacht. Dive Steel Boat with revolutionary "whale deck" design
Length:	30m/100ft
Width :	8m/26ft
Draft :	2m/6.5ft
Cabins:	8 double cabins all with en-suite bathroom, with individually controlled air-con in all cabins, hair dryers and toiletries in all cabins, daily fresh towels in cabins, Twin camera charging stations, light tables, 16 pax
Boat Amenities:	Air conditioning in all indoor areas, espresso machine and Ice-maker, Multi voltage camera charging areas, Computer for digital photographers, Multiple camera tables indoor (no s) & on deck, Dive deck and camera assistance, Audio & video entertainment center, Massage Service, Guest email service
Cruising Speed:	10 knots
Fuel Capacity :	35,000 liters
Fresh Water :	12,000 liters
Range:	3500 n/miles
Engines:	3 x Hino V10 420Hp
Generators:	2 x Hino 75Kw
Navigation Instruments:	Navtex 2 x GPS, 2 x Radar, Echo sounder, Depth sounder, Max Sea marine navigation software, Ship Security Alert System (SSAS), Automatic Identification System (AIS), SSB radio, 4 x VHF radios, CB radio, 2 x Mobile phones, Satellite phone, with Internet access.
Voltage:	220V & 110V electrical currents,
Diving:	Compressors 3 x Bauer Mariner II / Nitrox System: Membrane type, 32% fixed Oxygen
Dinghies:	2 x 5.6m/18ft, 40Hp
Crew:	13 Patient and knowledgeable dive crew

CHARTER PRICE:

ON REQUEST ✉ INFO@CRUISINGINDONESIA.COM

Contact us:

info@cruisingindonesia.com

WWW.CRUISEINDONESIA.COM

✉ E-Mail us for a tailor-made dive cruise